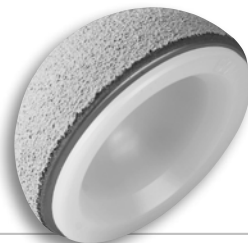


## APRIL Poly

Cementless press-fit acetabular cup, polyethylene insert.  
Titanium alloy (Ti6Al4V-ISO 5832-3). Coatings: Porous titanium and hydroxyapatite (ISO 13779-2).

Sizes	Ref.	Sizes	Ref.
∅ 46 mm	1027 4600	∅ 56 mm	1027 5600
∅ 48 mm	1027 4800	∅ 58 mm	1027 5800
∅ 50 mm	1027 5000	∅ 60 mm	1027 6000
∅ 52 mm	1027 5200	∅ 62 mm	1027 6200
∅ 54 mm	1027 5400	∅ 64 mm	1027 6400



## INLOCK Crosslinked

Highly-crosslinked polyethylene insert (Chirulen 1020 X – ASTM F2565).  
Compatible with APRIL Poly and HILOCK system cups.

Cup sizes	∅ 28 mm 0°	∅ 28 mm 10°	∅ 32 mm 0°	∅ 32 mm 10°
∅ 46 mm	1513 4620	1513 4621	-	-
∅ 48 mm	1513 4820	1513 4821	-	-
∅ 50 mm	-	-	1513 5030	1513 5031
∅ 52 mm	-	-	1513 5230	1513 5231
∅ 54 mm	-	-	1513 5430	1513 5431
∅ 56 mm	-	-	1513 5630	1513 5631
∅ 58 mm	-	-	1513 5830	1513 5831
∅ 60 mm	-	-	1513 6030	1513 6031
∅ 62 mm	-	-	1513 6230	1513 6231
∅ 64 mm	-	-	1513 6430	1513 6431



## INLOCK

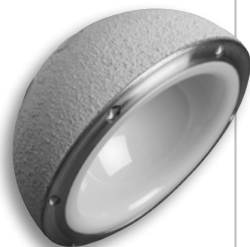
Polyethylene insert (UHMWPE ISO 5834-2).  
Compatible with APRIL Poly and HILOCK system cups.  
See ref. p. 17.

## APRIL Ceramic

Cementless press-fit acetabular cup, ceramic insert.  
Titanium alloy (Ti6Al4V-ISO 5832-3). Coatings: Porous titanium and hydroxyapatite (ISO 13779-2).

Sizes	Ref.
Ø 40 mm	1025 4000*
Ø 42 mm	1025 4200*
Ø 44 mm	1025 4400*
Ø 46 mm	1025 4600
Ø 48 mm	1025 4800
Ø 50 mm	1025 5000
Ø 52 mm	1025 5200

Sizes	Ref.
Ø 54 mm	1025 5400
Ø 56 mm	1025 5600
Ø 58 mm	1025 5800
Ø 60 mm	1025 6000
Ø 62 mm	1025 6200
Ø 64 mm	1025 6400



\* Only available upon request

## BIOLOX® Delta Insert

Truncated conical ceramic insert (ISO 6474-2).

Cup sizes	Ø 28 mm	Ø 32 mm	Ø 36 mm	Ø 40 mm
Ø 40 mm	1510 2835	-	-	-
Ø 42 mm	1510 2835	-	-	-
Ø 44 mm	1510 2835	-	-	-
Ø 46 mm	-	1510 3239	-	-
Ø 48 mm	-	1510 3239	-	-
Ø 50 mm	-	1510 3239	-	-
Ø 52 mm	-	-	1510 3644	-
Ø 54 mm	-	-	1510 3644	-
Ø 56 mm	-	-	1510 3644	-
Ø 58 mm	-	-	1510 3648	1510 4048*
Ø 60 mm	-	-	1510 3648	1510 4048*
Ø 62 mm	-	-	1510 3648	1510 4048*
Ø 64 mm	-	-	1510 3648	1510 4048*



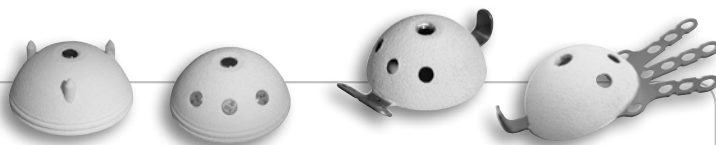
\* Only available upon request

# HILOCK

Cementless acetabular cup system, polyethylene insert.

Titanium alloy (Ti6Al4V-ISO 5832-3).

Coatings: Porous titanium and hydroxyapatite (ISO 13779-2).



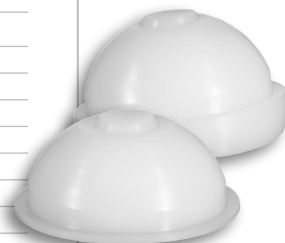
Sizes	Hilock	Hilock Line	Hilock Rev	Hilock 3L
Ø 40 mm	-	1017 4000	1007 4000	-
Ø 42 mm	-	1017 4200	1007 4200	-
Ø 44 mm	-	1017 4400	1007 4400	-
Ø 46 mm	1010 4600	1017 4600	1007 4600	-
Ø 48 mm	1010 4800	1017 4800	1007 4800	1020 4800
Ø 50 mm	1010 5000	1017 5000	1007 5000	1020 5000
Ø 52 mm	1010 5200	1017 5200	1007 5200	1020 5200
Ø 54 mm	1010 5400	1017 5400	1007 5400	1020 5400
Ø 56 mm	1010 5600	1017 5600	1007 5600	1020 5600
Ø 58 mm	1010 5800	1017 5800	1007 5800	1020 5800
Ø 60 mm	1010 6000	1017 6000	1007 6000	1020 6000
Ø 62 mm	1010 6200	1017 6200	1007 6200	1020 6200
Ø 64 mm	1010 6400	1017 6400	1007 6400	1020 6400
Ø 66 mm	-	1017 6600	1007 6600	1020 6600
Ø 68 mm	-	1017 6800	1007 6800	1020 6800
Ø 70 mm	-	1017 7000	1007 7000	1020 7000

## INLOCK Crosslinked

Highly-crosslinked polyethylene insert (Chirulen 1020 X – ASTM F2565).

Compatible with APRIL Poly and HILOCK system cups.

Cup sizes	Ø 28 mm 0°	Ø 28 mm 10°	Ø 32 mm 0°	Ø 32 mm 10°
Ø 46 mm	1513 4620	1513 4621	-	-
Ø 48 mm	1513 4820	1513 4821	-	-
Ø 50 mm	-	-	1513 5030	1513 5031
Ø 52 mm	-	-	1513 5230	1513 5231
Ø 54 mm	-	-	1513 5430	1513 5431
Ø 56 mm	-	-	1513 5630	1513 5631
Ø 58 mm	-	-	1513 5830	1513 5831
Ø 60 mm	-	-	1513 6030	1513 6031
Ø 62 mm	-	-	1513 6230	1513 6231
Ø 64 mm	-	-	1513 6430	1513 6431

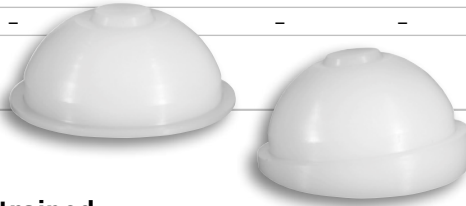


# HILOCK

## INLOCK

Polyethylene insert (UHMWPE ISO 5834-2).  
Compatible with HILOCK and APRIL Poly cups.

Cup sizes	Ø 22.2 mm 0°	Ø 22.2 mm 10°	Ø 28 mm 0°	Ø 28 mm 10°	Ø 32 mm 0°	Ø 32 mm 10°
Ø 40 mm	1505 4010	1505 4011	-	-	-	-
Ø 42 mm	1505 4210	1505 4211	-	-	-	-
Ø 44 mm	1505 4410	1505 4411	-	-	-	-
Ø 46 mm	1505 4610	1505 4611	1505 4620	1505 4621	-	-
Ø 48 mm	1505 4810	1505 4811	1505 4820	1505 4821	-	-
Ø 50 mm	1505 5010	1505 5011	1505 5020	1505 5021	-	-
Ø 52 mm	1505 5210	1505 5211	1505 5220	1505 5221	-	-
Ø 54 mm	1505 5410	1505 5411	1505 5420	1505 5421	1505 5430	1505 5431
Ø 56 mm	-	-	1505 5620	1505 5621	1505 5630	1505 5631
Ø 58 mm	-	-	1505 5820	1505 5821	1505 5830	1505 5831
Ø 60 mm	-	-	1505 6020	1505 6021	1505 6030	1505 6031
Ø 62 mm	-	-	1505 6220	1505 6221	1505 6230	1505 6231
Ø 64 mm	-	-	1505 6420	1505 6421	1505 6430	1505 6431
Ø 66 mm	-	-	-	-	1505 6630	1505 6631
Ø 68 mm	-	-	-	-	1505 6830	1505 6831
Ø 70 mm	-	-	-	-	1505 7030	1505 7031



## INLOCK constrained

Constrained polyethylene insert (UHMWPE ISO 5834-2).  
Compatible with HILOCK and APRIL Poly cups.

Cup sizes	Ø 22.2 mm 0°	Ø 22.2 mm 10°	Ø 28 mm 0°	Ø 28 mm 10°
Ø 48 mm	1507 4810	1507 4811	-	-
Ø 50 mm	1507 5010	1507 5011	-	-
Ø 52 mm	1507 5210	1507 5211	-	-
Ø 54 mm	-	-	1507 5420	1507 5421
Ø 56 mm	-	-	1507 5620	1507 5621
Ø 58 mm	-	-	1507 5820	1507 5821
Ø 60 mm	-	-	1507 6020	1507 6021
Ø 62 mm	-	-	1507 6220	1507 6221
Ø 64 mm	-	-	1507 6420	1507 6421

